

FOR SALE

FORMER 2ND DISTRICT COURT OF APPEALS BUILDING

2.63± ACRES / 30,205± SF BUILDING

1005 E. MEMORIAL BLVD, LAKELAND, FL 33801
POLK COUNTY



PROPERTY FEATURES

- + DSL-BID-20-003
- + 2.63± acres / 30,205± SF Building built in 1961
- + Site access by appointment only
- + Strap number: 24-28-18-000000-011030
- + Zoning: O-2 - Office



CONTACT US

JEFF GRAY | Investment Sales Associate | +1 407 506 6016 | jeff.gray1@cbre.com

CBRE, Inc | Licensed Real Estate Broker | 200 S. Orange Ave., Suite 2100 | Orlando, FL 32801

FOR SALE FORMER 2nd DISTRICT COURT OF APPEALS BUILDING

1005 E. MEMORIAL BLVD
LAKELAND, FL 33801

OFFERING SUMMARY

PROPERTY DESCRIPTION

The former 2nd District Court of Appeals building is situated across 2.63± acres on East Memorial Boulevard in Lakeland, Florida. The single-story building contains 30,205 SF and was constructed in 1961. Surface parking sits adjacent to the building on the east side with a gated, covered parking section on the southwest side of the building.

LOCATION

The subject property is centrally located along Memorial Blvd, a major thoroughfare in Lakeland, with average daily traffic count of 41,863 vehicles. The Property is located within the Mid-Town Community Redevelopment District (CRA). Purchaser may be able to take advantage of any incentive programs offered by the City of Lakeland.

SIZE

2.63± ACRES / 30,205± SF BUILDING

ZONING

O-2 Office

AREA INFORMATION

Given Lakeland's (Polk County) strategic location on I-4 attracting warehouse and distribution centers, the trade employment sector has remained strong with annual job growth rates approaching 5%.

TRAFFIC COUNTS

- 41,863± daily average

PRICING

The property is to be sold via sealed bid "as is", "where is". Bids will be accepted until **12:00 NOON, TUESDAY, JANUARY 12, 2021**. Any bid received after that time will be returned to the BIDDER unopened. The Department of Environmental Protection is not responsible for bids mailed but not arriving by **12:00 NOON, TUESDAY, JANUARY 12, 2021**. All bids received by the bid submission deadline will be publicly opened at **2:00 PM, TUESDAY, JANUARY 12, 2021**.

A minimum acceptable bid of **\$875,000.00** has been set by the State, with a deposit in the amount of 10 percent of the **BIDDER'S BID due and included in the prospective buyers bid to purchase the property and is further defined in the bidding package**. Any award made will be to the highest responsive BIDDER, provided it is in the TRUSTEE'S interest to accept the bid. Any Bids that are less than the minimum acceptable bid will be considered counter proposals and will be deemed non-responsive and rejected. Deposits of buyers who are not the successful buyer of the property will be returned to the bidding party. The TRUSTEE'S or the DEPARTMENT, as staff to the TRUSTEE'S, reserves the right to reject any or all bids.

FOR MORE INFORMATION PLEASE CONTACT:

Jeff Gray | Investment Sales Associate | +1 407 506 6016 | jeff.gray1@cbre.com

www.StateofFloridaSurplusLands.com

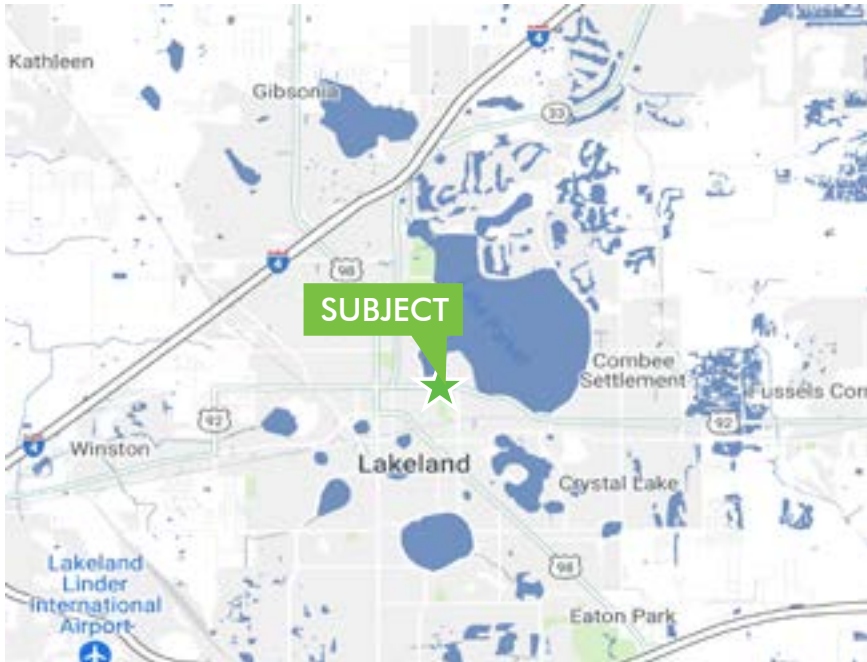
DISCLAIMER: All information contained on this website/brochure has been compiled from a variety of sources and, as such, is for general informational purposes only and subject to change without notice. Neither the Florida Department of Environmental Protection (Department) nor the Board of Trustees of the Internal Improvement Trust Fund makes any representations or warranties of any kind, express or implied, with respect to the content, quality, completeness, accuracy, or reliability of any information contained on this website/brochure or through links to other websites. Neither the Department nor the Board of Trustees of the Internal Improvement Trust Fund assumes any legal liability for the content, quality, accuracy or completeness of the information. Any reliance you place on this information is therefore strictly at your own risk. In no event will the Department or Board of Trustees of the Internal Improvement Trust Fund be liable for any loss or damages, whether direct, indirect, general, consequential, incidental, exemplary or special, arising from your use of the information provided in this brochure or on this website or links to any other websites. Interested parties are advised to seek professional assistance or advice prior to submitting a bid form or entering into a sales contract. The acreage used in this brochure/website is estimated and not based on a survey. The purchase price of a surplus property will not be reduced regardless of any difference between the estimated acreage and the acreage determined by a survey or other means

FOR SALE FORMER 2nd DISTRICT COURT OF APPEALS BUILDING

1005 E. MEMORIAL BLVD
LAKELAND, FL 33801



LOCATION MAP



PROPERTY IMAGES



Exterior - Front Entrance



Exterior - Rear of Building



CONTACT US

JEFF GRAY

Investment Sales Associate

+1 407 506 6016

jeff.gray1@cbre.com

CBRE, Inc. | Licensed Real Estate Broker



Interior - Administrative Offices



Interior - Courtroom

© 2020 CBRE, Inc. The information contained in this document has been obtained from sources believed reliable. While CBRE, Inc. does not doubt its accuracy, CBRE, Inc. has not verified it and makes no guarantee, warranty or representation about it. It is your responsibility to independently confirm its accuracy and completeness. Any projections, opinions, assumptions or estimates used are for example only and do not represent the current or future performance of the property. The value of this transaction to you depends on tax and other factors which should be evaluated by your tax, financial and legal advisors. You and your advisors should conduct a careful, independent investigation of the property to determine to your satisfaction the suitability of the property for your needs.

Photos herein are the property of their respective owners and use of these images without the express written consent of the owner is prohibited.

www.StateofFloridaSurplusLands.com

CBRE