

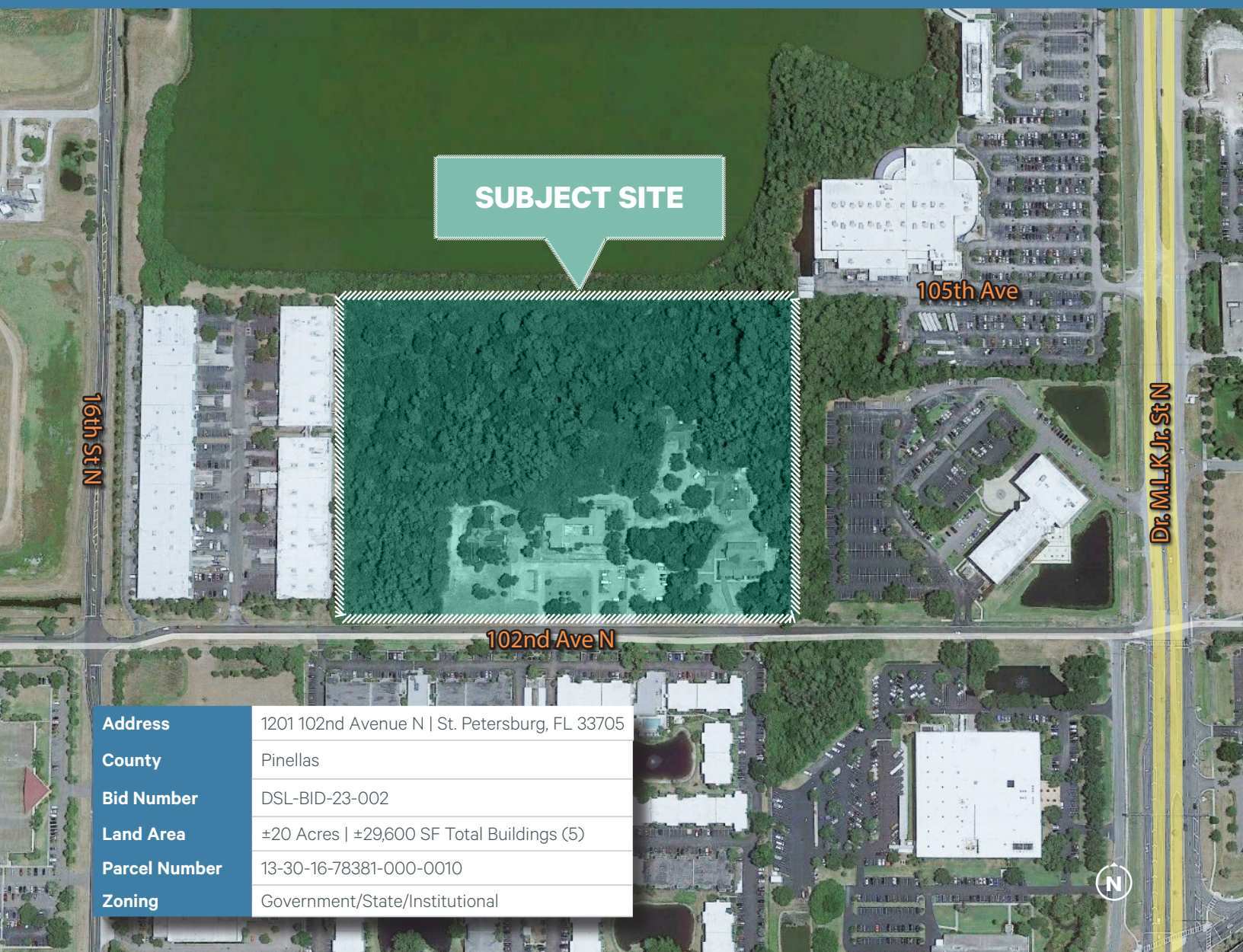
For Sale

CBRE

Redevelopment Opportunity in Pinellas County

1201 102nd Avenue N
St. Petersburg, FL 33705
www.StateofFloridaSurplusLands.com

±20 Acres of Land / ±29,600 SF Total Buildings (5)



Address	1201 102nd Avenue N St. Petersburg, FL 33705
County	Pinellas
Bid Number	DSL-BID-23-002
Land Area	±20 Acres ±29,600 SF Total Buildings (5)
Parcel Number	13-30-16-78381-000-0010
Zoning	Government/State/Institutional

OFFERING SUMMARY

Property Description

The subject site consists of one land parcel totaling ±20 acres. The land is generally flat. Property improvements onsite consist of five (5) buildings totaling ±29,600 square feet and were built in 1971.

Location

The parcel is located along 102nd Avenue North in St. Petersburg, FL, less than half a mile northwest of Gandy Blvd, and 0.20 miles west of Dr. M.L.K. Jr. St N.

Pricing

The property is to be sold via sealed bid “as is,” “where is.” Bids will be accepted until **NOON, ET, WEDNESDAY, MAY 24, 2023**. Any bid received after that time will be returned to the BIDDER unopened. The Department of Environmental Protection is not responsible for bids mailed, but not arriving by **NOON, ET, WEDNESDAY, MAY 24, 2023**. All bids received by the bid submission deadline will be publicly opened at **2:00 PM, ET, WEDNESDAY, MAY 24, 2023**.

A minimum acceptable bid of **\$5,490,000** has been set by the State, with a deposit in the amount of **10 percent of the BIDDER’S BID due and included in the prospective buyers bid to purchase the property and is further defined in the bidding package**. Any award made will be to the highest responsive BIDDER, provided it is in the TRUSTEE’S interest to accept the bid. Any Bids that are less than the minimum acceptable bid will be considered counter proposals and will be deemed non-responsive and rejected. Deposits of buyers who are not the successful buyer of the property will be returned to the bidding party. The TRUSTEE’S or the DEPARTMENT, as staff to the TRUSTEE’S, reserves the right to reject any or all bids.

Disclaimer

All information contained on this website/brochure has been compiled from a variety of sources and, as such, is for general informational purposes only and subject to change without notice. Neither the Florida Department of Environmental Protection (Department) nor the Board of Trustees of the Internal Improvement Trust Fund makes any representations or warranties of any kind, express or implied, with respect to the content, quality, completeness, accuracy, or reliability of any information contained on this website/brochure or through links to other websites. Neither the Department nor the Board of Trustees of the Internal Improvement Trust Fund assumes any legal liability for the content, quality, accuracy or completeness of the information. Any reliance you place on this information is therefore strictly at your own risk. In no event will the Department or Board of Trustees of the Internal Improvement Trust Fund be liable for any loss or damages, whether direct, indirect, general, consequential, incidental, exemplary or special, arising from your use of the information provided in this brochure or on this website or links to any other websites. Interested parties are advised to seek professional assistance or advice prior to submitting a bid form or entering into a sales contract. The acreage used in this brochure/website is estimated and not based on a survey. The purchase price of a surplus property will not be reduced regardless of any difference between the estimated acreage and the acreage determined by a survey or other means.

Contact Us

TOM KARPENSKÉ

Vice President | CBRE Advisory & Transaction Services

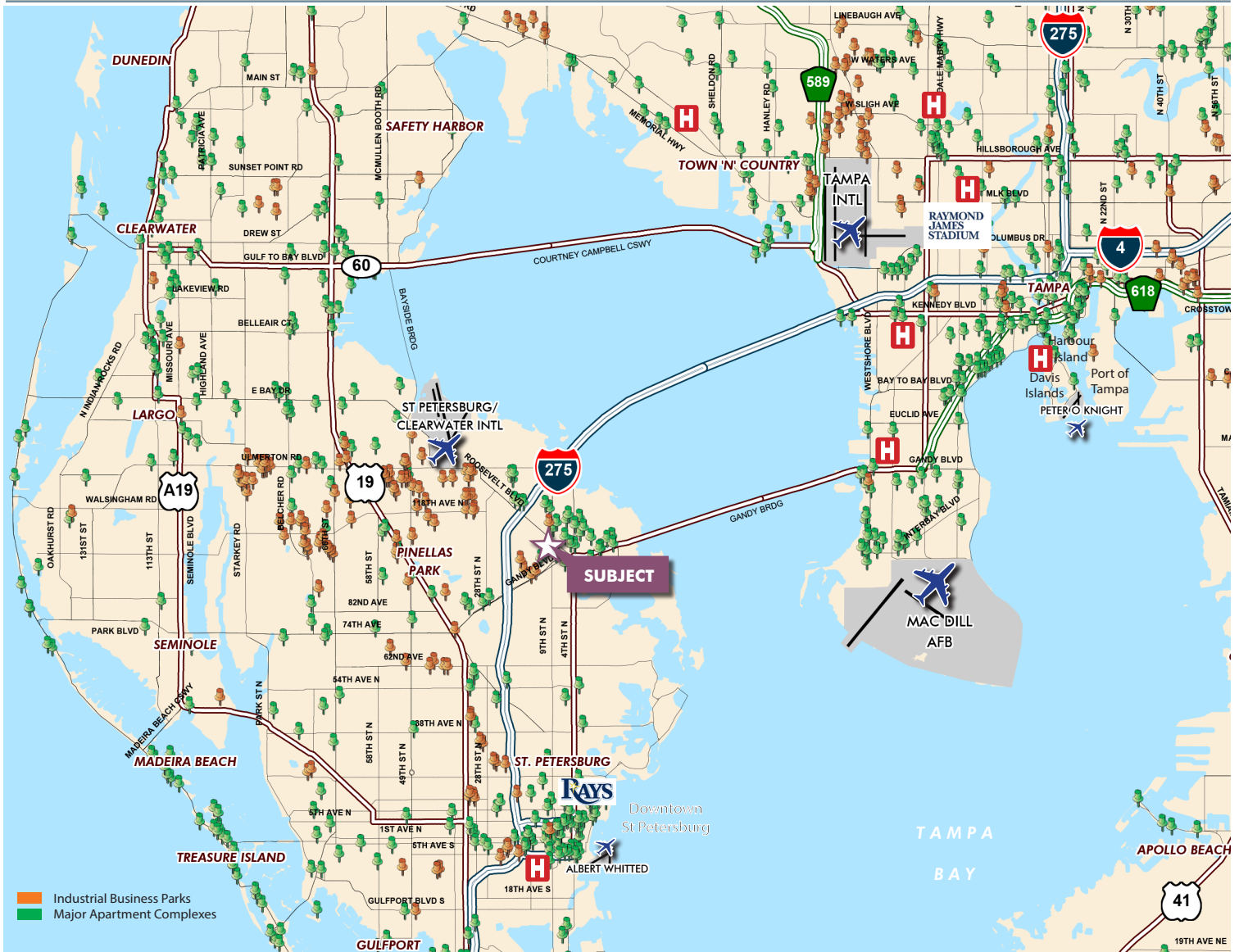
T: +1 813 273 8437 | E: tom.karpenske@cbre.com

CBRE, Inc. | License Real Estate Broker | 101 E. Kennedy Blvd | Tampa, FL 33602

Redevelopment Opportunity in Pinellas County

1201 102nd Avenue N | St. Petersburg, FL 33705

For Sale



About Pinellas County

- Pinellas County encompassing the cities of St. Petersburg, Clearwater, Belleair, Dunedin, Largo, Oldsmar, Pinellas Park, Safety Harbor, Seminole, Tarpon Springs and of course the world famous Gulf Beaches, and just lies to the west of Tampa
- Pinellas forms a peninsula bounded on the west by the Gulf of Mexico and on the south and east by Tampa Bay
- There are 3,347 people per square mile in Pinellas County
- 280 square miles with 24 municipalities
- St. Petersburg is the largest city with a population of 244,769. Clearwater is the County Seat
- Pinellas County is 38 miles long, and 15 miles at its broadest point, for a total of 280 square miles. 588 miles of coastline

Redevelopment Opportunity in Pinellas County

1201 102nd Avenue N | St. Petersburg, FL 33705

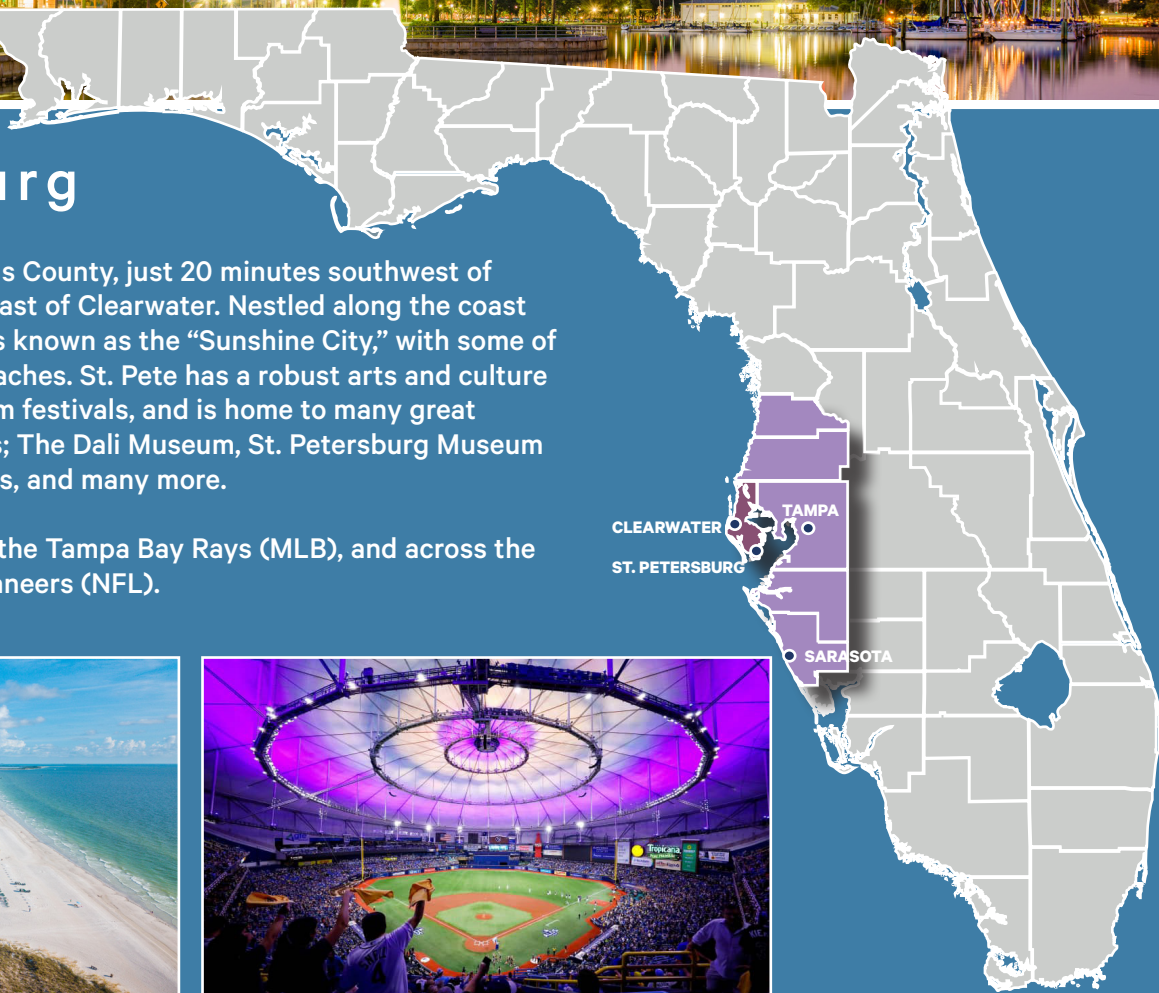
For Sale



St. Petersburg

Conveniently located in Pinellas County, just 20 minutes southwest of Tampa, and 30 minutes southeast of Clearwater. Nestled along the coast of Tampa Bay, St. Petersburg is known as the “Sunshine City,” with some of the nation’s highest ranked beaches. St. Pete has a robust arts and culture scene that hosts live music, film festivals, and is home to many great museums and galleries such as; The Dali Museum, St. Petersburg Museum of History, Museum of Fine Arts, and many more.

St. Petersburg is also home to the Tampa Bay Rays (MLB), and across the bay from the Tampa Bay Buccaneers (NFL).



Contact Us

TOM KARPENSKÉ

Vice President | CBRE Advisory & Transaction Services

T:+1 813 273 8437 | E: tom.karpenske@cbre.com

CBRE, Inc. | License Real Estate Broker | 101 E. Kennedy Blvd | Tampa, FL 33602

© 2023 CBRE, Inc. All rights reserved. This information has been obtained from sources believed reliable, but has not been verified for accuracy or completeness. You should conduct a careful, independent investigation of the property and verify all information. Any reliance on this information is solely at your own risk. CBRE and the CBRE logo are service marks of CBRE, Inc. All other marks displayed on this document are the property of their respective owners, and the use of such logos does not imply any affiliation with or endorsement of CBRE. Photos herein are the property of their respective owners. Use of these images without the express written consent of the owner is prohibited.